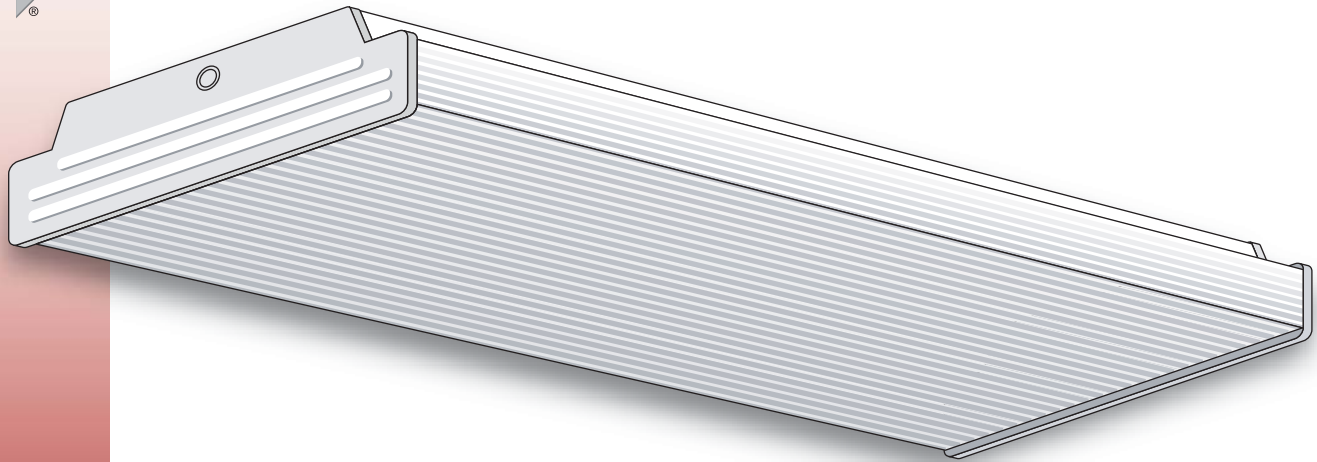


300 Series Wraparound



GENERAL DESCRIPTION

A low-profile 2- or 4-lamp wraparound for use with one-piece prismatic lenses.

SPECIFICATIONS

Housing: Die-formed heavy-gauge steel with side flanges for extra uniformity and rigidity.

Ballast Cover: Snaps into housing to cover ballast and wires.

Socket Plates: Slide on, for easy wiring.

Ends: Embossed for rigidity. Can be ordered with cut down ends for reverse-form puffs.

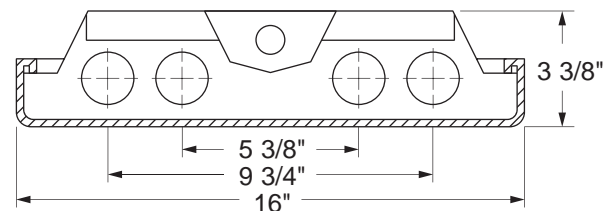
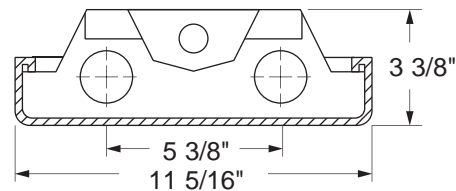
Finish: White polyester polymer with a minimum of 82% reflectivity.

Diffuser (not included): Housing is designed for one-piece prismatic lenses. Diffusers snap on for easy servicing and hinge from either side. 6' and 8' units require two individual diffusers joined with a plastic strap.

Mounting: Units may be surface or stem mounted, individually or in continuous rows.

NOTES

Dimensions subject to change without notice.
This product is an OEM Component Kit requiring final assembly by a qualified OEM fixture manufacturer.



Catalog No.	Lamps	Length
300-220	2	24"
300-230TAN	4	72"
300-240	2	48"
300-240TAN	4	96"
300-248	2	48"
300-272	2	72"
300-296	2	96"
300-420	4	24"
300-420WCUT	4	24"
300-430TAN	8	72"
300-440	4	48"
300-440WCUT	4	48"
300-440TAN	8	96"
300-448	4	48"
300-472	4	72"
300-496	4	96"