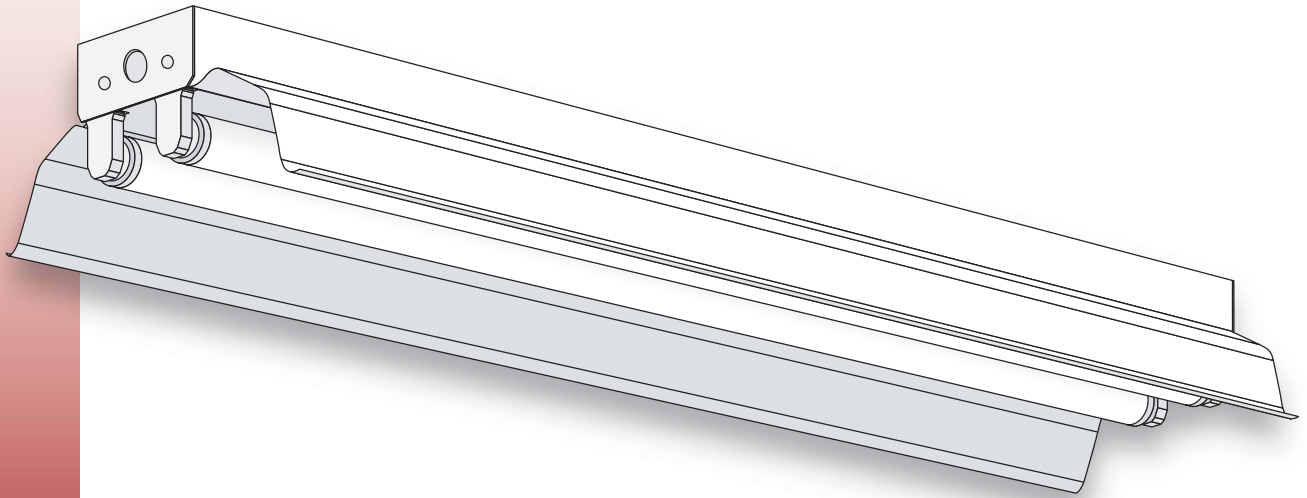
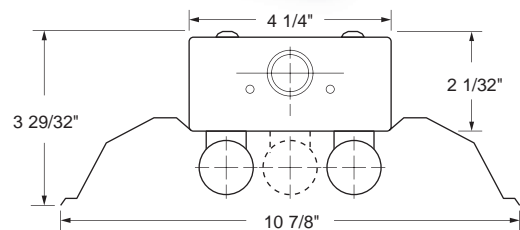


SEI Shallow Economy Industrial



GENERAL DESCRIPTION

A high quality all-purpose economy Industrial with symmetrical reflector. All parts snap together for ease of installation and maintenance. Side knockouts are included for a convenience outlet, a pull switch and conduit. Sides and back have knockouts for chain hangers.



SEI Series End View

SPECIFICATIONS

Housing: Die-formed heavy-gauge cold rolled steel with side knockouts for a convenience outlet, a pull switch and conduit. Sides and back have knockouts for chain hanger.

Reflector: One end of reflector slides into socket plate and the other end is held on by a cam-lock (not included). Fabricated in two sections for 72" and 96" bodies to simplify installation. Aligners available for tandem configurations and continuous runs.

Ends and Socket Plates: Snap-in type. Ends also function as couplers for continuous runs.

Finish: White polyester polymer with a minimum of 82% reflectivity.

Mounting: Designed for surface, stem or chain hanging. Can be installed as individual units or in continuous rows.

NOTES

Dimensions subject to change without notice.
This product is an OEM Component Kit requiring final assembly by a qualified OEM fixture manufacturer.

Catalog No.	Lamps	Length	Type
SEI120	1	24"	Bi-pin
SEI130	1	36"	Bi-pin
SEI130TAN	2	72"	Bi-pin
SEI140	1	48"	Bi-pin
SEI140TAN	2	96"	Bi-pin
SEI148	1	48"	Slimline
SEI172	1	72"	Slimline
SEI196	1	96"	Slimline
SEI220	2	24"	Bi-pin
SEI230	2	36"	Bi-pin
SEI230TAN	4	72"	Bi-pin
SEI240	2	48"	Bi-pin
SEI240TAN	4	96"	Bi-pin
SEI248	2	48"	Slimline
SEI272	2	72"	Slimline
SEI296	2	96"	Slimline